



Lesser Spotted Eagle

- Threats, Flyway and Demand for Action -

Hilmar Feltheer von Münchhausen

Deutsche Wildtier Stiftung
Hamburg, Germany
www.DeutscheWildtierStiftung.de



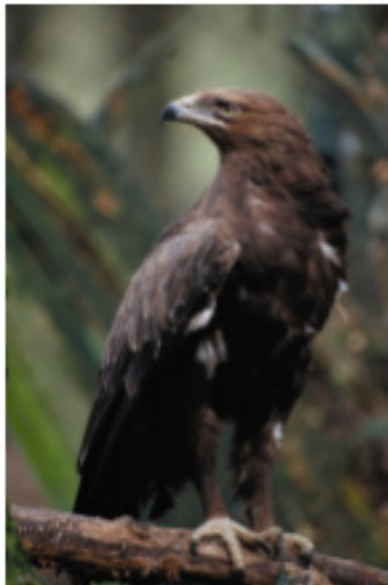
Taxonomy



- Order: Falconiformes (Diurnal Birds of Prey)
- Family: Accipitridae (Hawks, Eagles & Kites)
- Genus: Aquilinae
- Species: *Aquila pomarina* (Lesser Spotted Eagle - „LSE“)



Characteristics



- Length: approx. 60 - 65 cm
- Wingspan: approx. 1.50 m
- Weight: 1.3 - 1.8 kg
- Lifespan: up to 26 years
- lays 1 - 2, rarely 3 eggs
- One of the smallest eagle species

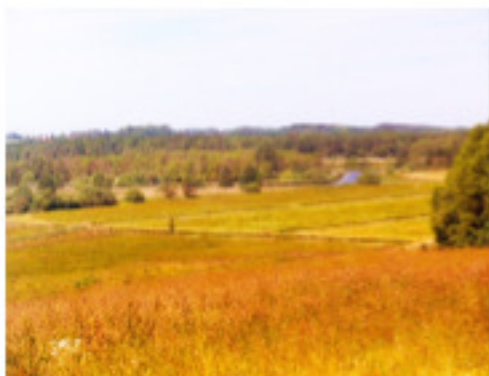


Migratory Species

Lesser Spotted Eagle:
Longest migration route of all European eagle species (from Europe to southern Africa up to 10.000 km)



Breeding Area



- ◆ High demands in terms of habitat quality: well structured and unfragmented landscapes
- ◆ Breeding area: large and undisturbed mixed forests with lakes or swamps (approx. 50 ha/ pair)



Hunting Area



- ◆ Hunting over open landscapes near to breeding area
- ◆ Hunting predominantly by walking on the ground, but also in flight or by stalking from trees
- ◆ Prey consists of small mammals, small and medium-sized birds and amphibians



Distribution Range in Summertime



Source: EBCC Atlas of European Breeding Birds

- ◆ Global Population: about 15.000 – 20.000 Breeding Pairs



Population in Decline

- ◆ Formerly widespread all over Europe
- ◆ Today highly endangered in many European countries (extinct or very rare e. g. in Austria, Czech Republic, Hungary, Croatia, Serbia, Greece and Germany)
- ◆ Decrease is still in progress.
- ◆ Germany: Number of breeding pairs decreased by 20 % in the last 10 Years (1996 = 130 / 2007 = 103)



International Conservation Status

- ◆ Convention on Migratory Species (CMS / „Bonn Convention“): Listed in Annex II = „Species with unfavourable conservation status“
- ◆ European Union Birds Directive (79/409/EEC): Listed in Annex I = “vulnerable bird species requiring special habitat protection”



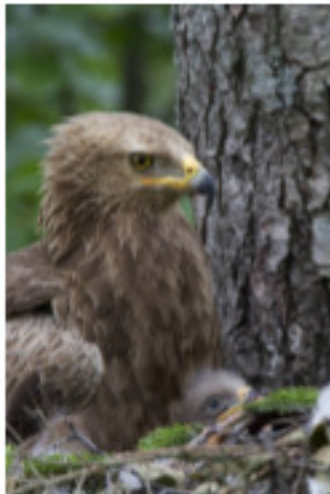
Main Threads



- ◆ **Habitat degradation and loss** caused by wetland drainage, urbanisation and intensification of agriculture and forestry
- ◆ **Poaching** along the migration route



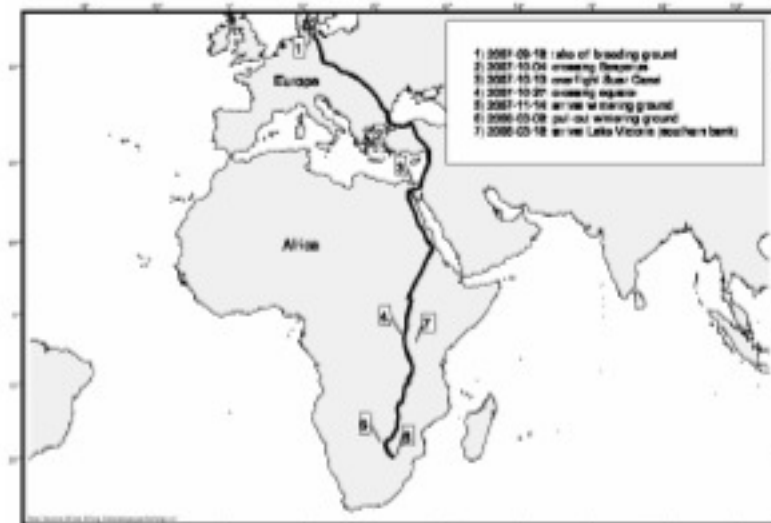
Conservation Programme of the Deutsche Wildtier Stiftung



- ◆ Part 1: Improving Breeding Areas in Germany
- ◆ Part 2: Research on the Migration Route and Policy Work against poaching
- ◆ Partner: World Working Group on Birds of Prey and Owls (W.W.G.B.P.)
- ◆ 2006 – 2011
- ◆ Total budget: around 1 Mio. € sponsored partly by the German government



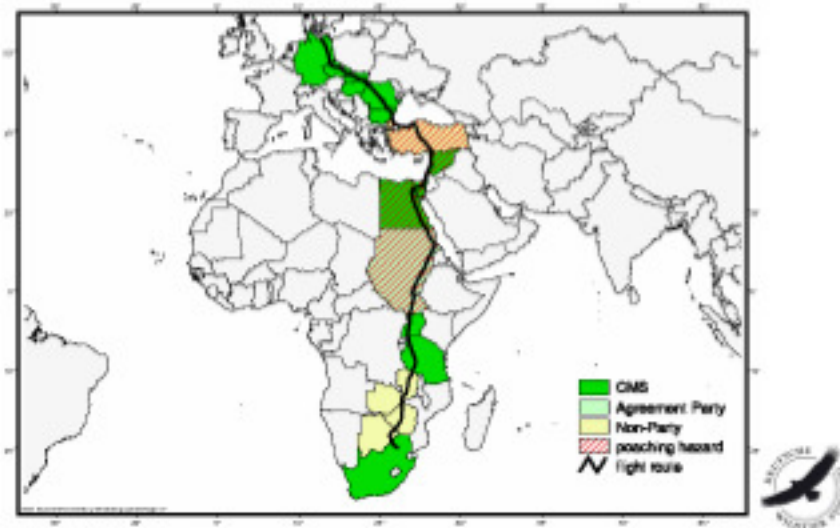
Migration route of a satellite-tracked LSE



Source: Deutsche Wildtier Stiftung and W.W.G.B.P.



CMS & Migration Route



International Actions Needed

- Upgrading of the Lesser Spotted Eagle from Annex II to Annex I of CMS
Result: Participating states accept direct responsibility to protect the species and have to enforce actions in terms of habitat protection and recovery to prevent the species from extinction
- Ban of poaching and implementation of national protection measures
- Both could be actions for a joint effort of CIC and the German Wildlife Foundation



Current International Efforts

- Convention on Migratory Species (CMS):
Draft Memorandum of Understanding on the Conservation of Migratory Birds of Prey in Africa and Eurasia proposed on 25th October 2007



.... help the Lesser Spotted Eagle to take off!
Thank you.



Photo: M. Börner; M. Meergans; E.Hoyer; P.Wernicke; Paul Voskamp/ Flickr.com; afmd.net / A.Schahuber

